

AS-2 Kipper [K-10SNB, ASM, 200kT Nuclear] (1963?, Tu-16K-10N, SR Low-Alt, Operational)

Guided Weapon

Type: Guided Weapon

Weight: 4200.0 kg

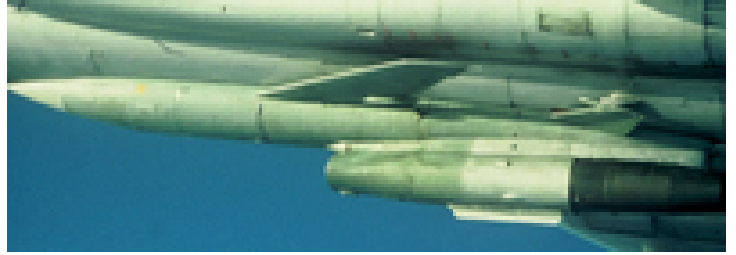
Length: 9.45 m

Span: 4.88 m

Length: 9.45 m

Diameter: 0.9

Generation: None



Properties: Home On Jam (HOJ), Flight Profile - Terrain Following, Weapon - INS Navigation, Flight Profile - Level Cruise Flight

Targets: Surface Vessel

Sensors / EW:

- Active Radar Seeker - (ASM MR, AS-2, Early Gen) Radar, Weapon Seeker, Active Radar, Max range: 9.3 km
- Passive Radar Seeker - (SS-N-2a/b/c, AS-1, AS-2) ESM, Weapon Seeker, Anti-Radiation, Max range: 18.5 km

Weapons / Loadouts:

- AS-2 Kipper [K-10SNB, ASM, 200kT Nuclear] - (1963?, Tu-16K-10N, SR Low-Alt, Operational) Guided Weapon. Surface Max: 222.2 km.