

## L 9892 San Giorgio - 2000 2x LCVP, 3x LCM-6

### Italy

Type: LPD - Amphibious Transport Dock

Vessel

Max Speed: 21 kt

Commissioned: 2000

Length: 133.3 m

Beam: 20.5 m

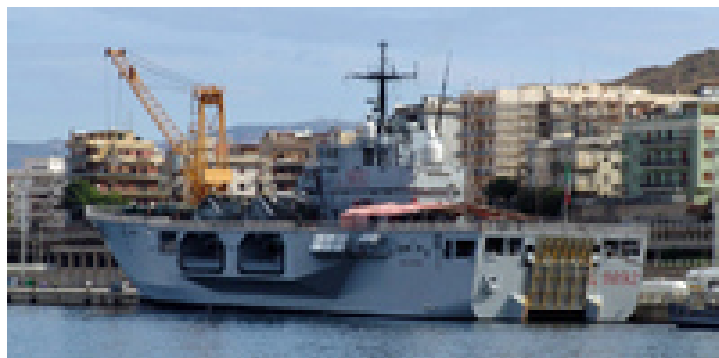
Draft: 5.3 m

Crew: 164

Displacement: 6690 t

Displacement Full: 7650 t

Propulsion: 2x GMT A420 Diesels



### Sensors / EW:

- Telegon 4 - (AK 1200) ESM, HF/DF, Max range: 926 km
- MM/SPN-748 - (AK 1200) Radar, Radar, Surface Search & Navigation, Max range: 74.1 km
- MM/SPS-702 - (1986, SPQ-702?) Radar, Radar, Target Indicator, 2D Surface-to-Air & Surface-to-Surface, Max range: 74.1 km
- MM/SLQ-732 Nettuno [ELT 211, ESM] - (Italy) ESM, ELINT w/ OTH Targeting, Max range: 926 km
- MM/SLQ-732 Nettuno [ELT 318/521, ECM] - (Italy) ECM, OECM & DECM, Offensive & Defensive ECM, Max range: 0 km

---

### Weapons / Loadouts:

- 12.7mm/50 MG Burst [10 rnds] - (Facility/Ship, No Anti-Air Capability) Gun. Surface Max: 1.9 km. Land Max: 1.9 km.
- 25mm/80 OTO Breda KBA Burst [20 rnds] - Gun. Air Max: 1.5 km. Surface Max: 2.8 km. Land Max: 2.8 km.
- SCLAR Chaff - Decoy (Expendable). Surface Max: 1.9 km.
- SCLAR Flare - Decoy (Expendable). Surface Max: 1.9 km.