

K 11 Stockholm [Spica III] - 2001

Sweden

Type: FFL - Corvette

Max Speed: 32 kt

Commissioned: 2001

Length: 50.5 m

Beam: 7.5 m

Draft: 2.0 m

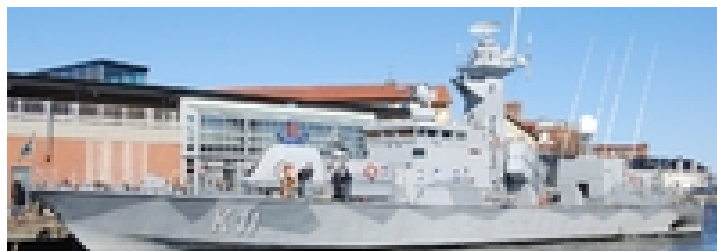
Crew: 30

Displacement: 310 t

Displacement Full: 335 t

Propulsion: 2x MTU 16V 396 TB94 Diesels, 1x

Vericor TF50 Gas Turbine, CODAG



Sensors / EW:

- PN-621 [Scanter] - (1985) Radar, Radar, Surface Search & Navigation, Max range: 46.3 km
- PS-751 & PS 726 [Sea Giraffe 50 HC & ArtE 726E Surveillance] - (1984) Radar, Radar, Target Indicator, 3D Surface-to-Air & Surface-to-Surface, Max range: 55.6 km
- TSM 2642 Salmon - (1984) Hull Sonar, Active/Passive, Hull Sonar, Active/Passive Search & Track, Max range: 7.4 km
- SA 950 - (Elma attack sonar) Hull Sonar, Active-Only, Hull Sonar, Active-Only Mine Hunting & ASW Mortar Fire Control [Detection & Classification], Max range: 1.1 km
- PQ-872 [AR-700A(V)1 Phoenix II] - (ASP-2000, Assoc w PQ 844) ESM, ELINT, Max range: 926 km
- CEROS 200 Tracker [9LV Mk3 Basic] - (Group, PE 723 Radar, 9GR400) Radar, Radar, FCR, Surface-to-Air & Surface-to-Surface, Short-Range, Max range: 46.3 km
- EOS 500 [CCD] - (Group, PE 723 Radar, 9GR400) Visual, LLTV, Weapon Director, Max range: 185.2 km
- EOS 500 [IR Camera] - (Group, PE 723 Radar, 9GR400) Infrared, Infrared, Weapon Director Camera, Max range: 185.2 km
- EOS 500 [Laser Rangefinder] - (Group, PE 723 Radar, 9GR400) Laser Rangefinder, Laser Rangefinder for Weapon Director, Max range: 7.4 km
- PQ-844 - (Assoc w PQ 868, PQ 872) ECM, OECM & DECM, Offensive & Defensive ECM, Max range: 0 km

Weapons / Loadouts:

- Philax Chaff - Decoy (Expendable). Surface Max: 1.9 km.
- Philax Flare - Decoy (Expendable). Surface Max: 1.9 km.
- RB 15M Mk2 - (1997) Guided Weapon. Surface Max: 148.2 km.
- 57mm/70 Bofors Mk2 GP Burst [4 rnds] - Gun. Air Max: 2.2 km. Surface Max: 9.3 km. Land Max: 9.3 km.
- 40mm/70 Single Bofors Burst [4 rnds] - Gun. Air Max: 2.2 km. Surface Max: 5.6 km. Land Max: 5.6 km.
- Elma ASW-600 ASW Mortar Salvo [M90 Hard Kill DC, 9 rnds] - (1993) Gun. Subsurface Max: 0.6 km.
- Tp 613 - (1985, Surface, Anti-Ship) Torpedo. Surface Max: 22.2 km.

K 11 Stockholm [Spica III] - 2001