

Type 053H1G Jianghu V [558 Zigong] - 1996

China

Type: FFG - Guided Missile Frigate

Max Speed: 26 kt

Commissioned: 1996

Length: 103.2 m

Beam: 10.8 m

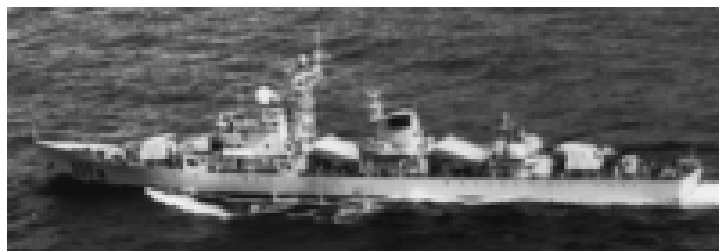
Draft: 3.1 m

Crew: 200

Displacement: 1565 t

Displacement Full: 1960 t

Propulsion: 2x 12E390VA Diesels



Sensors / EW:

- China Type 352 Square Tie - (SSM, Rangout) Radar, Radar, FCR, Surface-to-Surface, Max range: 74.1 km
- China Type 923-1 Jug Pair - (RW-23-1, Watch Dog) ESM, RWR, Radar Warning Receiver, Max range: 222.2 km
- China Type 343 Sun Visor [Radar] - (Group, 100mm FCS) Radar, Radar, FCR, Weapon Director, Max range: 27.8 km
- China Type 343 Wasp Head [Visual Director] - (Group, 100mm FCS) Visual, Visual, Weapon Director TV Camera, Max range: 74.1 km
- China Type 354 Eye Shield - (2D, MX-902) Radar, Radar, Air & Surface Search, 3D Medium-Range, Max range: 185.2 km
- China Type 341 Rice Lamp - (37mm) Radar, Radar, FCR, Weapon Director, Max range: 37 km
- China Type 517 Knife Rest - (Pea Sticks) Radar, Radar, Air Search, 2D Medium-Range, Max range: 203.7 km
- China SJD-5A [Tamir-11 Impr] - (Jianghu III, EH-5A, Echo Type 5) Hull Sonar, Active-Only, Hull Sonar, Active-Only Search, Max range: 3.7 km
- China SJD-4 - (Luda) Hull Sonar, Active-Only, Hull Sonar, Active-Only Mortar Fire Control, Max range: 3.7 km

Weapons / Loadouts:

- China Type 81 ASW Rocket Salvo [5 rnds] - (RBU-1200) Rocket. Subsurface Max: 1.9 km.
- 100mm/56 Twin Frag Burst [2 rnds] - Gun. Air Max: 2.8 km. Surface Max: 11.1 km. Land Max: 11.1 km.
- 100mm/56 Twin HE Burst [2 rnds] - Gun. Air Max: 2.8 km. Surface Max: 11.1 km. Land Max: 11.1 km.
- HY-1J [CSS-N-2 Safflower, Ship] - (1979) Guided Weapon. Surface Max: 129.6 km.
- 37mm/63 Twin Burst [20 rnds] - Gun. Air Max: 1.9 km. Surface Max: 2.8 km.
- Generic Chaff Rocket - (Ship-only) Decoy (Expendable). Surface Max: 1.9 km.