

YPF Puerto Rosales - 1978

Argentina

Type: AO - Fleet Oiler

Max Speed: 16 kt

Commissioned: 1978

Decommissioned: 1992

Length: 170.7 m

Beam: 25.9 m

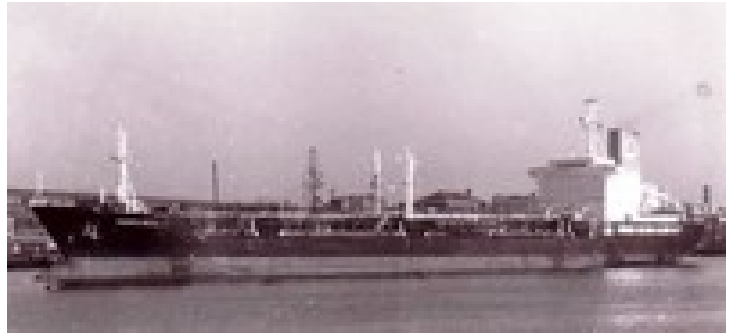
Draft: 11.0 m

Crew: 37

Displacement: 38752 t

Displacement Full: 38752 t

Propulsion: 2x Fiat GMT Grandi Motori Diesels



Sensors / EW:

- Decca - (Generic) Radar, Radar, Surface Search & Navigation, Max range: 37 km