

A 385 Fort Grange [Fort Class] - 1986

United Kingdom

Type: AFS - Combat Stores Ship

Max Speed: 22 kt

Commissioned: 1986

Length: 185.1 m

Beam: 24.0 m

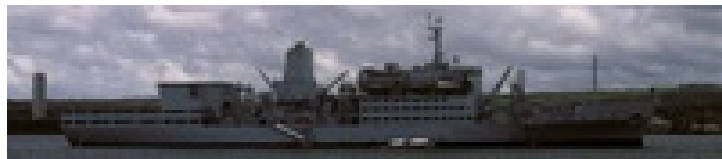
Draft: 9.0 m

Crew: 150

Displacement: 16045 t

Displacement Full: 23380 t

Propulsion: Sulzer 8RND90 Diesel



Sensors / EW:

- Type 1006(2) [KH 19/9A] - (Surface Ships) Radar, Radar, Surface Search & Navigation, Max range: 118.5 km
- Decca - (Generic) Radar, Radar, Surface Search & Navigation, Max range: 37 km
- Mentor A - (Sky Guardian 200) ESM, RWR, Radar Warning Receiver, Max range: 222.2 km

Weapons / Loadouts:

- 20mm/70 Oerlikon Mk7 Burst [20 rnds] - Gun. Air Max: 1.5 km. Surface Max: 1.9 km. Land Max: 1.9 km.
- Plessey Shield Flare - Decoy (Expendable). Surface Max: 1.9 km.
- Plessey Shield Chaff - Decoy (Expendable). Surface Max: 1.9 km.

OVERVIEW: The FORT class is a diesel-powered Fleet Replenishment Ship (AEFS).

DETAILS: The FORT class Fleet Replenishment Ship is designed for underway replenishment of fleet units using both RAS and VERTREP.

It is also capable of being used as a base for ASW helicopters.

Specifications:

Displacement: 23,384 tons (full load)

Speed: 22 knts

Engineering: 1 shaft, 1 diesel engine

Range: 10,000 nm @ 20 knts

Complement: 127 + 45 RN for helo detachment, 36 civilian supply staff

In Commission: 1978-?

A 385 Fort Grange [Fort Class] - 1986

Completed: 2

Capacity:

NOTES: Units in class: FORT GRANGE (A 385), FORT AUSTIN (A 386). FORT GRANGE renamed FORT ROSALIE in 2000.

SOURCES: Moore, John Evelyn. Jane's Fighting Ships 1987-88. London: Jane's Pub, 1987, pg. 681 ; RFA Fort Rosalie (A385) - Wikipedia,

the free encyclopedia. (n.d.). Retrieved May 4, 2015, from [http://en.wikipedia.org/wiki/RFA_Fort_Rosalie_\(A385\)](http://en.wikipedia.org/wiki/RFA_Fort_Rosalie_(A385))