

P 259 Redpole [Bird] - 1986

United Kingdom

Type: PB - Patrol Boat

Max Speed: 21 kt

Commissioned: 1986

Decommissioned: 1994

Length: 37.7 m

Beam: 7.2 m

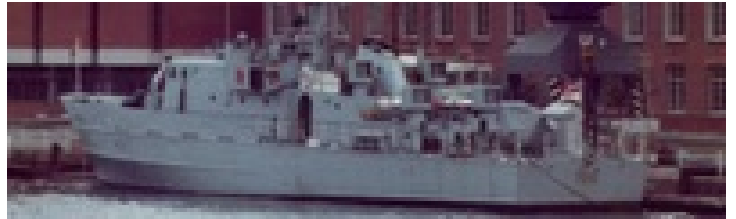
Draft: 2.0 m

Crew: 23

Displacement: 185 t

Displacement Full: 194 t

Propulsion: 2x Paxman 16YJCM Diesels



Sensors / EW:

- Type 1006(2) [KH 19/9A] - (Surface Ships) Radar, Radar, Surface Search & Navigation, Max range: 118.5 km

Weapons / Loadouts:

- 7.62mm MG Burst [20 rnds] - (Ship & Facility) Gun. Surface Max: 0.4 km. Land Max: 0.4 km.

- 40mm/60 Mk9 Single Bofors Burst [2 rnds] - Gun. Air Max: 2.2 km. Surface Max: 5.6 km. Land Max: 5.6 km.