

P 6092 Zobel [Type 142A] - 1972

Germany [FRG/Reunified]

Type: PCF - Fast Patrol Craft

Max Speed: 40 kt

Commissioned: 1972

Decommissioned: 1984

Length: 42.6 m

Beam: 7.1 m

Draft: 2.3 m

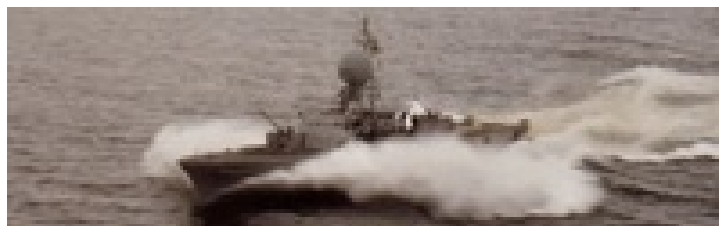
Crew: 39

Displacement: 206 t

Displacement Full: 235 t

Propulsion: 1x Mercedes-Benz MB-518C

Diesel



Sensors / EW:

- NO/VR-1C - (Norway, Torpedo-boat) ESM, RWR, Radar Warning Receiver, Max range: 222.2 km
- 3RM-20 - (AN/SPS-63) Radar, Radar, Surface Search, Short-Range, Max range: 74.1 km
- M.20 - (Gun, Torpedo FCS, Small Ships, WM.20-Series) Radar, Radar, FCR, Surface-to-Air & Surface-to-Surface, Short-Range, Max range: 59.3 km
- Galileo OG R7/2 - (Galileo OG 20) Visual, Visual, Weapon Director TV Camera, Max range: 129.6 km

Weapons / Loadouts:

- 12.7mm/50 MG Burst [10 rnds] - (Facility/Ship, No Anti-Air Capability) Gun. Surface Max: 1.9 km. Land Max: 1.9 km.
- DM2A1 Seeaal - (1970, Ship, Anti-ship, Passive) Torpedo. Surface Max: 18.5 km.
- 40mm/70 Single Breda Burst [4 rnds] - Gun. Air Max: 2.2 km. Surface Max: 5.6 km. Land Max: 5.6 km.