

Radar (China JY-27 Wide Mat) - 2x, Misidentified as JY-11B

Syria

Type: Building (Surface)

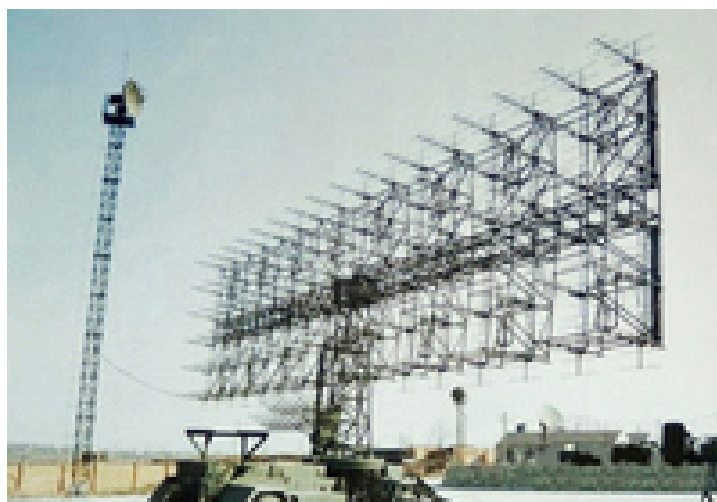
Commissioned: 2007

Operator: Air Force

Length: 12 m

Width: 12 m

Crew: 0



Sensors / EW:

- China JY-27 Wide Mat - Radar, Radar, Air Search, 3D Long-Range, Max range: 407.4 km

OVERVIEW: The JY-27 WIDE MAT is a long-range 2-D surveillance and early warning radar operating in the A/B-band

DETAILS: The JY-27 is claimed to have pseudorandom frequency hopping, and ECCM capabilities.

Specifications:

Frequency: 30-300 MHz (approx) (A/B Band (NATO), VHF Band (IEEE))

Power output: unknown kW(average); unknown kW (peak)

PRF: unknown pps

Range Resolution: 150 m (range), 1 degrees azimuth

On/Off time: unknown

Deploy/Stow Time unknown min/ unknown min

Detection Range:

Pd=80%, 1.5 m² RCS:

tgt alt. 100m: km

tgt alt. 18000m: km

Max Range: 444-722 km

NOTES: Design appears to be influenced by the 1L13 Nebo SV BOX SPRING and 1L119 Nebo SVU. The design

Radar (China JY-27 Wide Mat) - 2x, Misidentified as JY-11B

may provide a valuable early warning capability against stealth-type aircraft.

SOURCES: "PLA Air Defence Radars." Air Power Australia. Accessed March 28, 2015.

<http://www.ausairpower.net/APA-PLA-IADS-Radars.html> ; "Russian / PLA Low Band Surveillance Radar Systems (Counter LowObservable Technology Radars)." Air Power Australia. Accessed March 28, 2015.

<http://www.ausairpower.net/APA-Rus-Low-Band-Radars.html#mozTocId132830>.