

## F-16A Falcon - 1986

### Denmark

Type: Multirole (Fighter/Attack)

Min Speed: 350 kt

Max Speed: 920 kt

Commissioned: 1986

Length: 14.5 m

Wingspan: 9.5 m

Height: 4.8 m

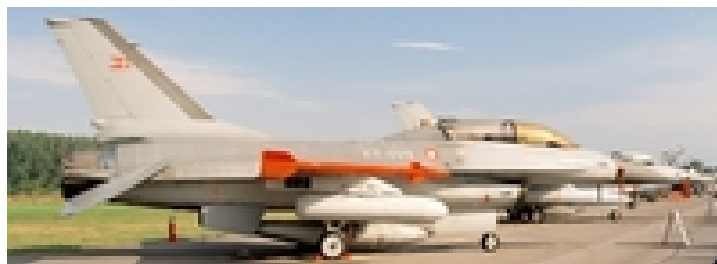
Crew: 1

Empty Weight: 7395 kg

Max Weight: 19200 kg

Max Payload: 6894 kg

Propulsion: 1x F100-PW-200



Sensors / EW: - AN/APG-66 - Radar, Radar, FCR, Air-to-Air & Air-to-Surface, Short-Range, Max range: 74.1 km

- AN/ALR-69 - ESM, RWR, Radar Warning Receiver, Max range: 222.2 km

- Generic Spotlight - Visual, Visual, Searchlight, Max range: 0.9 km

- AN/ALQ-162 Shadowbox - (Continuous-Wave-Radar Jammer) ECM, DECM, Defensive ECM, Max range: 0 km

---

### Weapons / Loadouts:

- AIM-9L Sidewinder - (1980) Guided Weapon. Air Max: 18.5 km.

- Per Udsen MRP Pod [IR] - Sensor Pod.

- 370 USG Drop Tank - Drop Tank.

- 300 USG Drop Tank - Drop Tank.

- Mk82 500lb LDGP - (1954) Bomb. Surface Max: 1.9 km. Land Max: 1.9 km.

- Mk84 2000lb LDGP - (1955) Bomb. Surface Max: 1.9 km. Land Max: 1.9 km.

- AIM-9N Sidewinder - (1975, AIM-9J-1) Guided Weapon. Air Max: 14.8 km.