

KC-25A [Boeing 747-100, KC-747] - 1978, 4x

Iran

Type: Tanker (Air Refueling)

Min Speed: 230 kt

Max Speed: 520 kt

Commissioned: 1978

Length: 70.6 m

Wingspan: 59.6 m

Height: 19.3 m

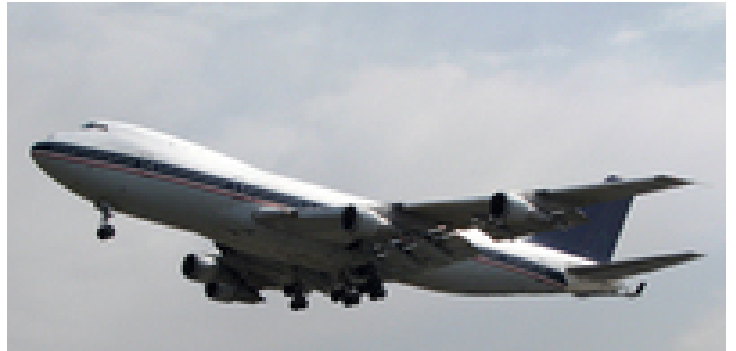
Crew: 3

Empty Weight: 162400 kg

Max Weight: 333390 kg

Max Payload: 0 kg

Propulsion: 4x JT9D-3A



Sensors / EW: - Generic Doppler Navigation/Weather - Radar, Radar, Weather and Navigation, Max range: 64.8 km