

F-16A Falcon - 1991

Norway

Type: Multirole (Fighter/Attack)

Min Speed: 350 kt

Max Speed: 920 kt

Commissioned: 1991

Length: 14.5 m

Wingspan: 9.5 m

Height: 4.8 m

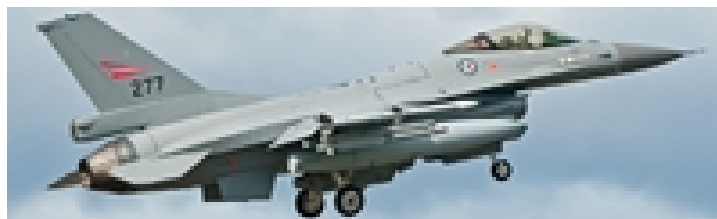
Crew: 1

Empty Weight: 7395 kg

Max Weight: 19200 kg

Max Payload: 6894 kg

Propulsion: 1x F100-PW-200



Sensors / EW: - AN/APG-66 - Radar, Radar, FCR, Air-to-Air & Air-to-Surface, Short-Range, Max range: 74.1 km
- AN/ALR-69 - ESM, RWR, Radar Warning Receiver, Max range: 222.2 km
- Generic Spotlight - Visual, Visual, Searchlight, Max range: 0.9 km

Weapons / Loadouts:

- RB 12 Penguin Mk3 - (1989) Guided Weapon. Surface Max: 55.6 km.
- 300 USG Drop Tank - Drop Tank.
- AIM-9L Sidewinder - (1980) Guided Weapon. Air Max: 18.5 km.
- 370 USG Drop Tank - Drop Tank.
- Mk82 500lb LDGP - (1954) Bomb. Surface Max: 1.9 km. Land Max: 1.9 km.
- Mk84 2000lb LDGP - (1955) Bomb. Surface Max: 1.9 km. Land Max: 1.9 km.
- Mk20 Rockeye II CB [247 x Mk118 Dual Purpose Bomblets] - (1969, Mk7 Dispenser) Bomb. Surface Max: 1.9 km. Land Max: 1.9 km.
- CRV-7 C14 70mm Rocket - (1976) Rocket. Surface Max: 3.7 km. Land Max: 3.7 km.
- AIM-9N Sidewinder - (1975, AIM-9J-1) Guided Weapon. Air Max: 14.8 km.