

P 151 Hugin - 1981

Sweden

Type: PCFG - Fast Guided Missile Patrol Craft

Max Speed: 35 kt

Commissioned: 1981

Length: 33.6 m

Beam: 6.3 m

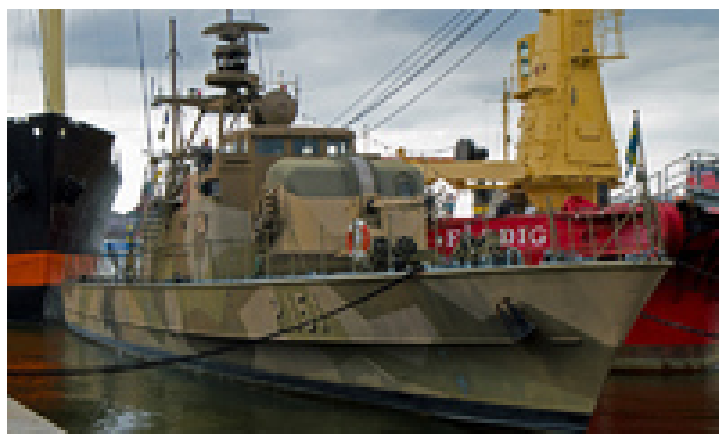
Draft: 1.7 m

Crew: 18

Displacement: 120 t

Displacement Full: 150 t

Propulsion: 2x MTU MB20V 672 TY90 Diesels



Sensors / EW:

- PN-827 [Decca TM 626] - Radar, Radar, Surface Search & Navigation, Max range: 37 km
- 9LV200 Mk2 [Radar] - (Group, PE 727 Radar, 9LV223, 225, 228, 249, ArtE-726) Radar, Radar, FCR, Weapon Director, Max range: 14.8 km
- 9LV200 Mk2 [TV Camera] - (Group, PE 727 Radar, 9LV223, 225, 228, 249, ArtE-726) Visual, Visual, Weapon Director TV Camera, Max range: 148.2 km
- 9LV200 Mk2 [IR] - (Group, PE 727 Radar, 9LV223, 225, 228, 249, ArtE-726) Infrared, Infrared, Weapon Director Camera, Max range: 148.2 km
- 9LV200 Mk2 [Laser Rangefinder] - (Group, PE 727 Radar, 9LV223, 225, 228, 249, ArtE-726) Laser Rangefinder, Laser Rangefinder for Weapon Director, Max range: 7.4 km
- PQ-858 [EWS 905] - (Group, PE 727 Radar, 9LV223, 225, 228, 249, ArtE-726) ESM, ELINT, Max range: 926 km
- SQ-3D - (Norway) Hull Sonar, Active-Only, Hull Sonar, Active-Only Search, Max range: 2.8 km
- PS-726 - (Assoc w Arte 726, 9LV200 Mk2) Radar, Radar, Surface Search, Short-Range, Max range: 46.3 km

Weapons / Loadouts:

- 57mm/70 Bofors Mk1 HCER Burst [4 rnds] - Gun. Surface Max: 8.3 km. Land Max: 8.3 km.
- 57mm/70 Bofors Mk1 HE Burst [4 rnds] - Gun. Air Max: 2.2 km. Surface Max: 8.3 km. Land Max: 8.3 km.
- RB 12 Penguin Mk2 - (1980) Guided Weapon. Surface Max: 37 km.
- Philax Chaff - Decoy (Expendable). Surface Max: 1.9 km.