

SKR Krivak II [Pr.1135M Burevestnik-M] - 1981

Soviet Union [-1991]

Type: FFG - Guided Missile Frigate

Max Speed: 30 kt

Commissioned: 1981

Length: 123.0 m

Beam: 14.2 m

Draft: 4.5 m

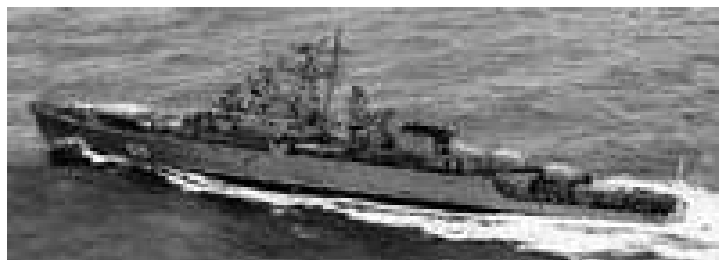
Crew: 192

Displacement: 2935 t

Displacement Full: 3305 t

Propulsion: 1x M-7K Gas Turbine, 2x M-62

Gas Turbines, COGAG



Sensors / EW:

- Don Kay [Volga] - Radar, Radar, Surface Search & Navigation, Max range: 46.3 km
- Mare Tail [MG-325 Vega] - (Krivak I/II, Assoc w Bull Nose (Titan-2)) VDS, Active/Passive Sonar, VDS, Active/Passive Variable Depth Sonar, Max range: 5.6 km
- Bull Nose [MG-332 Titan-2T] - (Krivak II) Hull Sonar, Active/Passive, Hull Sonar, Active/Passive Search, Max range: 5.6 km
- Eye Bowl [Sprut] - (SS-N-14) Radar, Radar, FCR, Surface-to-Surface, Max range: 22.2 km
- Pop Group [MPZ-301] - (Land Roll) Radar, Radar, FCR, Surface-to-Air, Short-Range, Max range: 44.4 km
- Head Net C [MR-310U Angara-M] - (Back-to-Back) Radar, Radar, Air Search, 2D Medium-Range, Max range: 185.2 km
- Bell Squat - (Assoc w Bell Shroud) ECM, OECM & DECM, Offensive & Defensive ECM, Max range: 0 km
- Bell Shroud - (Assoc w Bell Squat) ESM, ELINT, Max range: 926 km
- Kite Screech A [Radar] - (Group, AK-100 GFCR, Krivak) Radar, Radar, FCR, Weapon Director, Max range: 74.1 km
- Kite Screech A [TV Camera] - (Group, AK-100 GFCR, Krivak) Visual, Visual, Weapon Director TV Camera, Max range: 74.1 km

Weapons / Loadouts:

- PK-16 Chaff [TSP-60U] - (1971, 82mm) Decoy (Expendable). Surface Max: 1.9 km.
- PK-16 Flare [TST-60U] - (1971, 82mm) Decoy (Expendable). Surface Max: 1.9 km.
- RBU-6000 Salvo [12 rnds] - (1961) Rocket. Subsurface Max: 4.6 km.
- Generic GMTR [Guided Missile Training Round] - (Aka Drill Round) Training Round.
- SA-N-4b Gecko [9M33M3] - (1981, 9K33M Osa-2M, SSC) Guided Weapon. Air Max: 14.8 km. Surface Max: 14.8 km.
- AK-100 100mm/70 HE - Gun. Surface Max: 9.3 km. Land Max: 9.3 km.
- AK-100 100mm/70 Frag - (Anti-Aircraft) Gun. Air Max: 2.8 km. Surface Max: 9.3 km. Land Max: 9.3 km.
- SS-N-14 Silex [60R, 5kT Nuclear Depth Charge] - (1969) Guided Weapon. Subsurface Max: 55.6 km.

SKR Krivak II [Pr.1135M Burevestnik-M] - 1981

- SS-N-14 Silex [84R, AT-2UM] - (1976) Guided Weapon. Subsurface Max: 55.6 km.
- Generic Towed Torpedo Decoy - (Soviet/Russian) Decoy (Towed). Surface Max: 1.9 km.
- SET-65M Enot-2 [NATO ET-80A[76]] - (1973, Ship) Torpedo. Subsurface Max: 7.4 km.